

### Stats at a Glance

	Aug 2023	YoY ('23 vs. '22)
Visitor Volume	3,319,700	4.0% ▲
Convention Attendance	647,600	64.3% ▲
Room Inventory	151,914	0.5% ▲
Hotel Occupancy	80.3%	3.5 ▲
Average Daily Rate (ADR)	\$158.47	7.0% ▲
RevPAR	\$127.25	11.9% ▲
Room Nights Occupied	3,780,600	5.1% ▲

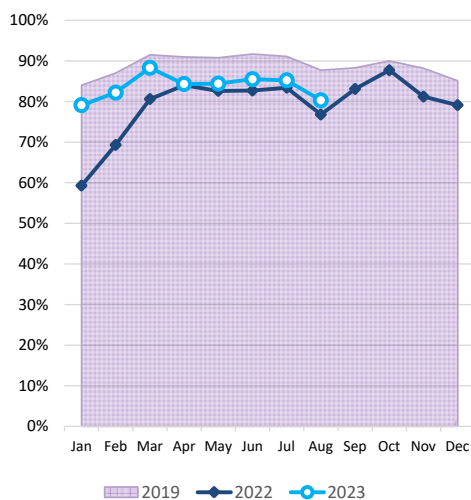
### Notes & Highlights

August was a solid month with more than 3.3M visitors as weekend occupancy was largely on par with last year while midweek saw notable gains supported in part by a strengthening convention segment that included recurring shows such as ASD Market Week as well the Summer 2023 Las Vegas Market show at World Market Center which fell in August this year vs. July in 2022.

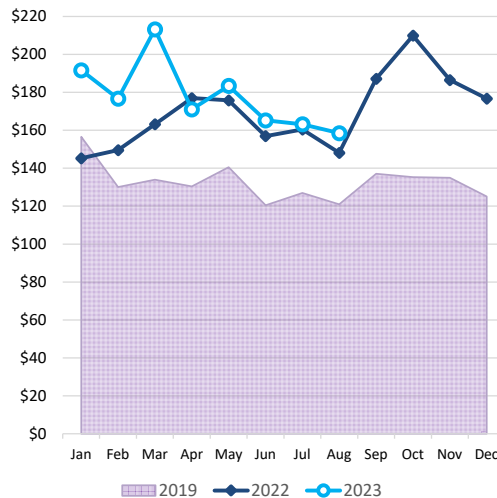
Overall hotel occupancy reached 80.3% for the month (+3.5 pts YoY) as Weekend occupancy came in at 89.7% (-0.4 pts YoY), and Midweek occupancy reached 77.0%, surpassing last August by 4.8 pts.

ADR growth continued in August, approaching \$159, +7.0% YoY while RevPAR exceeded \$127, +11.9% YoY.

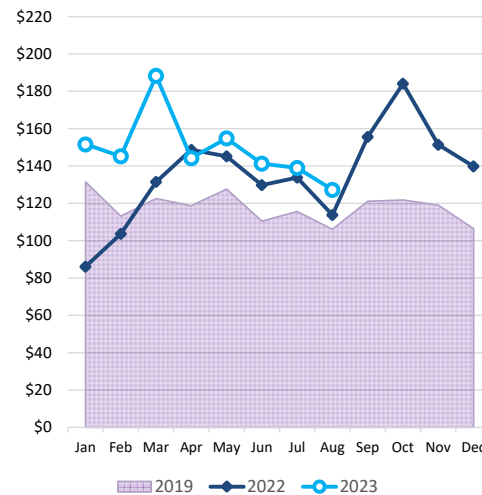
#### Las Vegas Hotel Occupancy



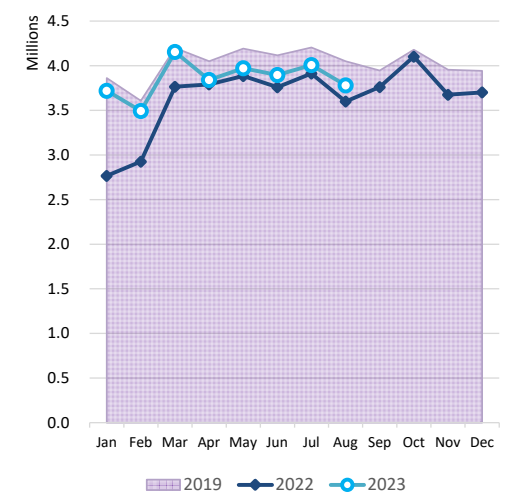
#### Las Vegas ADR



#### Las Vegas RevPAR



#### Room Nights Occupied



Notes: Occupancy, ADR and RevPAR data are derived from a survey sample representing more than 75% of the Las Vegas hotel inventory. Inherent variability in survey sampling and occasional variations in survey participants can affect monthly and year-over-year comparisons.



# LVCVA EXECUTIVE SUMMARY

of Las Vegas, Laughlin & Mesquite, NV Tourism Indicators

August 2023

DATA DETAIL		Aug 2023	Aug 2022	YoY ('23 vs. '22)	Aug 2023 YTD	Aug 2022 YTD	YoY ('23 vs. '22)
<b>LAS VEGAS</b>	Visitor Volume (est.)	3,319,700	3,190,600	4.0%	27,172,400	25,262,200	7.6%
	Convention Attendance (est.)	647,600	394,100	64.3%	4,144,100	3,188,100	30.0%
	Weighted Room Inventory (as of Aug)	151,914	151,116	0.5%	151,914	151,116	0.5%
	Hotel Occupancy	80.3%	76.8%	3.5	83.7%	77.4%	6.3
	Weekend Occupancy	89.7%	90.1%	-0.4	91.3%	88.7%	2.6
	Midweek Occupancy	77.0%	72.2%	4.8	80.5%	72.6%	7.9
	Strip Occupancy	83.5%	79.6%	3.9	86.4%	80.0%	6.4
	Downtown Occupancy	62.2%	59.7%	2.5	68.7%	64.4%	4.3
	Average Daily Room Rate (ADR)	\$158.47	\$148.09	7.0%	\$178.11	\$160.46	11.0%
	Strip ADR	\$167.51	\$157.58	6.3%	\$189.75	\$170.59	11.2%
	Downtown ADR	\$87.71	\$86.87	1.0%	\$99.46	\$94.12	5.7%
	Revenue Per Available Room (RevPAR)	\$127.25	\$113.73	11.9%	\$149.08	\$124.20	20.0%
	Strip RevPAR	\$139.87	\$125.43	11.5%	\$163.94	\$136.47	20.1%
	Downtown RevPAR	\$54.56	\$51.86	5.2%	\$68.33	\$60.61	12.7%
	Total Room Nights Occupied	3,780,600	3,598,400	5.1%	30,863,500	28,403,000	8.7%
	Total En/Deplaned Air Passengers	4,620,957	4,642,120	-0.5%	37,717,008	33,792,671	11.6%
Avg. Daily Auto Traffic: All Major Hwys	127,266 e	127,140	0.1%	130,000 e	127,795	1.7%	
Avg. Daily Auto Traffic: I-15 at NV/CA Border	44,147	45,668	-3.3%	44,448	45,875	-3.1%	
Gaming Revenue: Clark County	\$1,026,044,000	\$1,024,163,000	0.2%	\$8,775,119,000	\$8,401,717,000 r	4.4%	
Gaming Revenue: Las Vegas Strip	\$666,782,000	\$659,745,000	1.1%	\$5,719,975,000	\$5,405,505,000 r	5.8%	
Gaming Revenue: Downtown	\$64,030,000	\$64,564,000	-0.8%	\$586,801,000	\$563,946,000 r	4.1%	
Gaming Revenue: Boulder Strip	\$82,955,000	\$88,473,000	-6.2%	\$658,439,000	\$662,852,000	-0.7%	
<b>LAUGHLIN</b>	Visitor Volume (est.)	104,700	96,500	8.5%	894,200	850,000	5.2%
	Room Inventory (as of Aug)	8,692	8,634	0.7%	8,692	8,634	0.7%
	Total Occupancy	49.2%	45.1%	4.1	53.4%	50.7%	2.7
	Average Daily Room Rate (ADR)	\$60.31	\$69.38	-13.1%	\$61.58	\$67.56	-8.9%
	Revenue Per Available Room (RevPAR)	\$29.67	\$31.29	-5.2%	\$32.88	\$34.25	-4.0%
	Total Room Nights Occupied	132,600	120,700	9.9%	1,132,200	1,063,200	6.5%
	Gross Gaming Revenue (rounded)	\$34,484,000	\$36,070,000	-4.4%	\$350,029,000	\$342,826,000	2.1%
	Laughlin/Bullhead City En/Deplaned Passengers	9,716	6,816	42.5%	98,750	75,702	30.4%
	Avg. Daily Auto Traffic: Highway 163	4,394	4,294	2.3%	4,827	4,655	3.7%
	<b>MESQUITE</b>	Visitor Volume (est.)	69,000	66,000	4.5%	626,000	620,000
Room Inventory (as of Aug)		1,647	1,643	0.2%	1,647	1,643	0.2%
Total Occupancy		69.2%	65.5%	3.7	79.7%	79.1%	0.6
Average Daily Room Rate (ADR)		\$59.33	\$55.89	6.2%	\$75.06	\$70.67	6.2%
Revenue Per Available Room (RevPAR)		\$41.06	\$36.61	12.2%	\$59.82	\$55.90	7.0%
Total Room Nights Occupied		35,300	33,400	5.7%	318,900	315,800	1.0%
Gross Gaming Revenue (rounded)		\$13,106,000	\$13,565,000	-3.4%	\$121,954,000	\$121,652,000 r	0.2%
Avg. Daily Auto Traffic: I-15 at NV/AZ border		30,173	28,965	4.2%	29,701	29,369	1.1%

Sources: Las Vegas Convention and Visitors Authority; Harry Reid International Airport; Nevada Department of Transportation (NDOT); NV Gaming Control Board; Mohave County Airport Authority

Notes:

e - estimate; r - revised

Air passengers and auto traffic counts are a blend of commercial, pass-thru and resident traffic in addition to visitors.

Occupancy, ADR and RevPAR data are derived from a survey sample representing more than 75% of the Las Vegas hotel inventory.

Inherent variability in survey sampling and occasional variations in survey participants can affect monthly and year-over-year comparisons.