

Stats at a Glance

	Dec 2024	YoY ('24 vs. '23)
Visitor Volume	3,405,700	0.2% ▲
Convention Attendance	279,200	42.7% ▲
Room Inventory	150,612	-2.6% ▼
Hotel Occupancy	81.9%	2.0 ▲
Average Daily Rate (ADR)	\$193.68	3.7% ▲
RevPAR	\$158.62	6.3% ▲
Room Nights Occupied	3,825,400	-0.2% ▼

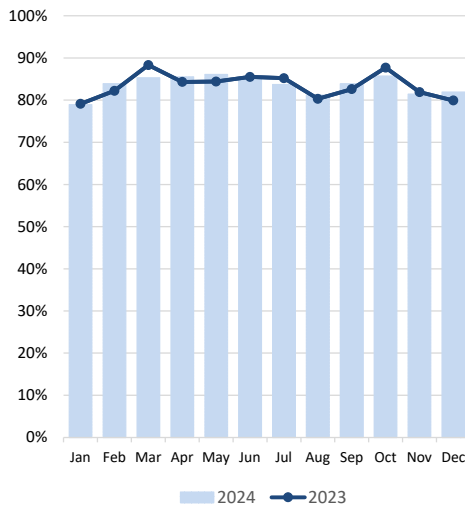
Notes & Highlights

Closing out the year with Dec visitation of 3.4M visitors (+0.2% YoY), Las Vegas hosted approx. 41.7M visitors for the year, up 2.1% from last year's 40.8M visitors.

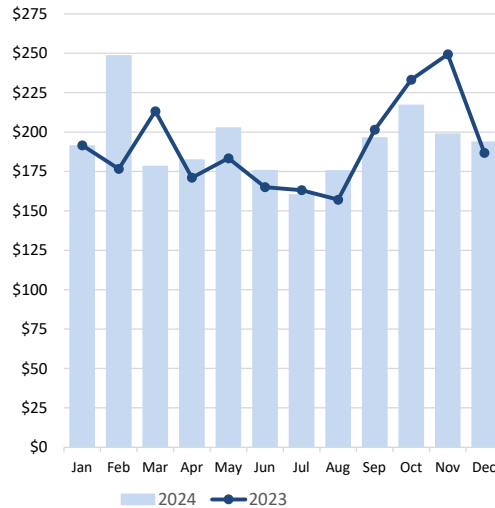
With a strong December to end the year, Las Vegas convention attendance reached roughly 6.0M for the year, matching last year's tally.

December occupancy reached 81.9%, up 2.0 pts with ADR and RevPAR seeing YoY increases of +3.7% and +6.3% respectively. For the year, Hotel occupancy landed at 83.6%, just ahead of last year (up 0.1 pts) with annual Weekend occupancy of 90.8% (up 0.1 pts) and annual Midweek occupancy of 80.4%, also up 0.1 pts. Annual ADR reached \$193 (+1.0% YoY) with annual RevPAR of \$161 (+1.1% YoY).

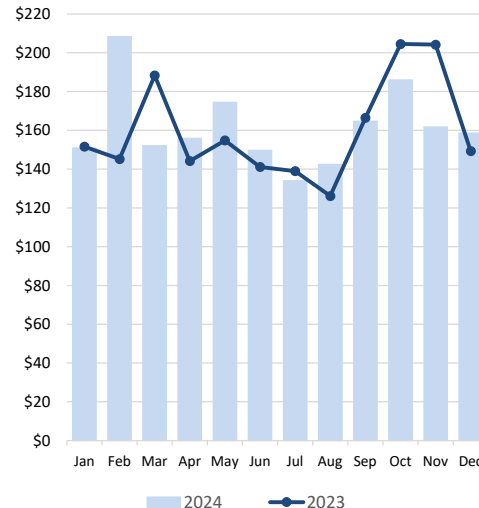
Las Vegas Hotel Occupancy



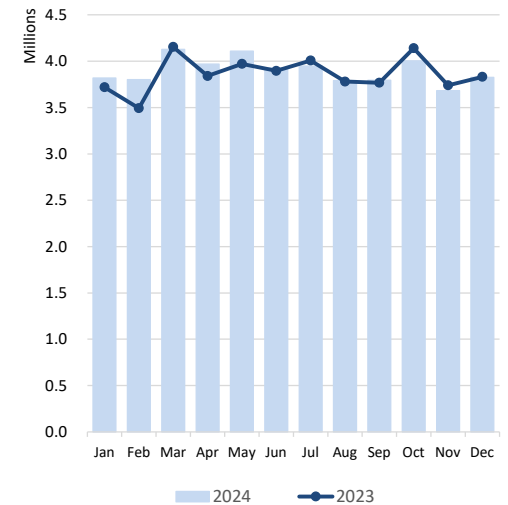
Las Vegas ADR



Las Vegas RevPAR



Room Nights Occupied



Notes: Occupancy, ADR and RevPAR data are derived from a survey sample representing more than 75% of the Las Vegas hotel inventory. Inherent variability in survey sampling and occasional variations in survey participants can affect monthly and year-over-year comparisons.



LVCVA EXECUTIVE SUMMARY

of Las Vegas, Laughlin & Mesquite, NV Tourism Indicators

December 2024

DATA DETAIL		Dec 2024	Dec 2023	YoY ('24 vs. '23)	Dec 2024 YTD	Dec 2023 YTD	YoY ('24 vs. '23)
LAS VEGAS	Visitor Volume (est.)	3,405,700	3,397,500	0.2%	41,676,300	40,829,900	2.1%
	Convention Attendance (est.)	279,200	195,700	42.7%	5,994,800	5,986,700	0.1%
	Weighted Room Inventory (as of Dec)	150,612	154,662	-2.6%	150,612	154,662	-2.6%
	Hotel Occupancy	81.9%	79.9%	2.0	83.6%	83.5%	0.1
	Weekend Occupancy	88.9%	87.7%	1.2	90.8%	90.7%	0.1
	Midweek Occupancy	79.5%	75.0%	4.5	80.4%	80.3%	0.1
	Strip Occupancy	85.3%	83.1%	2.2	86.4%	86.2%	0.2
	Downtown Occupancy	67.1%	65.5%	1.6	71.0%	69.7%	1.3
	Average Daily Room Rate (ADR)	\$193.68	\$186.82	3.7%	\$193.16	\$191.29	1.0%
	Strip ADR	\$206.58	\$198.83	3.9%	\$206.12	\$204.42	0.8%
	Downtown ADR	\$104.42	\$104.64	-0.2%	\$104.65	\$105.19	-0.5%
	Revenue Per Available Room (RevPAR)	\$158.62	\$149.27	6.3%	\$161.48	\$159.73	1.1%
	Strip RevPAR	\$176.21	\$165.23	6.6%	\$178.09	\$176.21	1.1%
	Downtown RevPAR	\$70.07	\$68.54	2.2%	\$74.30	\$73.32	1.3%
	Total Room Nights Occupied	3,825,400	3,831,300	-0.2%	46,801,000	46,343,300	1.0%
	Total En/Deplaned Air Passengers	4,872,798	4,820,302 r	1.1%	58,447,782	57,644,113 r	1.4%
Avg. Daily Auto Traffic: All Major Hwys	133,361 e	128,637 e	3.7%	130,656 e	129,628 e	0.8%	
Avg. Daily Auto Traffic: I-15 at NV/CA Border	47,560	46,276	2.8%	44,072	44,205	-0.3%	
Gaming Revenue: Clark County	\$1,288,159,000	\$1,269,661,000 r	1.5%	\$13,567,388,000	\$13,486,326,000 r	0.6%	
Gaming Revenue: Las Vegas Strip	\$881,255,000	\$905,341,000 r	-2.7%	\$8,812,484,000	\$8,900,968,000 r	-1.0%	
Gaming Revenue: Downtown	\$82,263,000	\$75,901,000 r	8.4%	\$931,265,000	\$909,711,000 r	2.4%	
Gaming Revenue: Boulder Strip	\$87,815,000	\$67,710,000	29.7%	\$959,652,000	\$965,540,000	-0.6%	
LAUGHLIN	Visitor Volume (est.)	81,000	74,700	8.4%	1,312,000	1,265,800	3.6%
	Room Inventory (as of Dec)	8,864	8,692	2.0%	8,864	8,692	2.0%
	Total Occupancy	35.7%	35.1%	0.6	49.0%	50.4%	-1.4
	Average Daily Room Rate (ADR)	\$55.14	\$61.25	-10.0%	\$60.47	\$61.37	-1.5%
	Revenue Per Available Room (RevPAR)	\$19.68	\$21.50	-8.4%	\$29.63	\$30.93	-4.2%
	Total Room Nights Occupied	98,200	94,700	3.7%	1,580,600	1,602,600	-1.4%
	Gross Gaming Revenue (rounded)	\$34,476,000	\$31,517,000	9.4%	\$482,040,000	\$511,065,000 r	-5.7%
	Laughlin/Bullhead City En/Deplaned Passengers	7,825	6,084 r	28.6%	137,180	146,502 r	-6.4%
	Avg. Daily Auto Traffic: Highway 163	4,433	4,403	0.7%	4,786	4,748	0.8%
MESQUITE	Visitor Volume (est.)	55,000	64,000	-14.1%	833,000	917,000	-9.2%
	Room Inventory (as of Dec)	1,559	1,650	-5.5%	1,559	1,650	-5.5%
	Total Occupancy	59.2%	63.5%	-4.3	73.2%	77.7%	-4.5
	Average Daily Room Rate (ADR)	\$78.06	\$71.07	9.8%	\$82.85	\$75.21	10.2%
	Revenue Per Available Room (RevPAR)	\$46.21	\$45.13	2.4%	\$60.65	\$58.44	3.8%
	Total Room Nights Occupied	28,600	32,500	-12.0%	429,600	467,300	-8.1%
	Gross Gaming Revenue (rounded)	\$15,961,000	\$16,419,000	-2.8%	\$189,018,000	\$183,567,000	3.0%
	Avg. Daily Auto Traffic: I-15 at NV/AZ border	30,411	27,967	8.7%	30,757	29,742	3.4%

Sources: Las Vegas Convention and Visitors Authority; Harry Reid International Airport; Nevada Department of Transportation (NDOT); NV Gaming Control Board; Mohave County Airport Authority

Notes:

Air passengers and auto traffic counts are a blend of commercial, pass-thru and resident traffic in addition to visitors.

Occupancy, ADR and RevPAR data are derived from a survey sample representing more than 75% of the Las Vegas hotel inventory.

Inherent variability in survey sampling and occasional variations in survey participants can affect monthly and year-over-year comparisons.

e - estimate; r - revised