

Stats at a Glance

	Feb 2024	YoY ('24 vs. '23)
Visitor Volume	3,374,300	9.5% ▲
Convention Attendance	764,800	15.3% ▲
Room Inventory	156,190	2.9% ▲
Hotel Occupancy	83.9%	1.7 ▲
Average Daily Rate (ADR)	\$248.35	40.6% ▲
RevPAR	\$208.37	43.5% ▲
Room Nights Occupied	3,801,100	8.8% ▲

Notes & Highlights

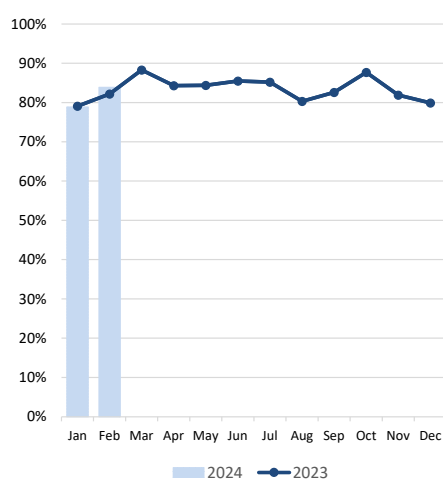
With an extra day from the leap year, a notable YoY increase in available rooms, a strong group segment and of course, a Super Bowl, the destination saw a robust YoY increase in visitors and record-breaking room rates. Visitation for the month saw a 9.5% increase to reach 3.37M visitors, or roughly 300,000 more visitors than last February.

With the recurring NAHB Int'l Builders' Show and Kitchen & Bath Industry Show, along with the rotational returns of National Auto Dealers Association (24k attendees) and Int'l Roofing Expo (13k attendees) and several mid-sized shows at properties across the destination, estimated convention attendance reached nearly 765k, +15.3% vs. last Feb.

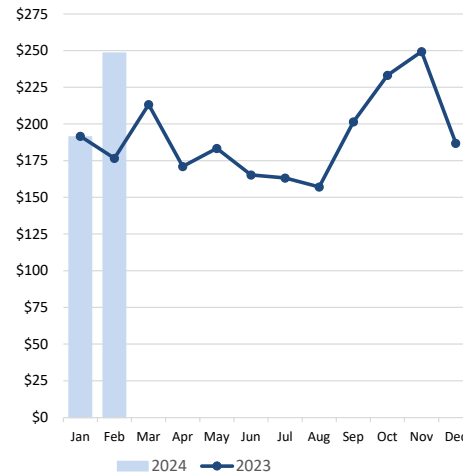
Despite the larger room inventory vs. last year, overall hotel occupancy for the month surpassed last February by 1.7 pts to reach 83.9% as Weekend occupancy reached 90.3%, up 1.0 pts YoY, and Midweek occupancy came in at 81%, up 2.2 pts YoY.

Driven by dramatically strong rates during Super Bowl, ADR for the month exceeded \$248 while RevPAR hit a record \$208, +43.5% YoY.

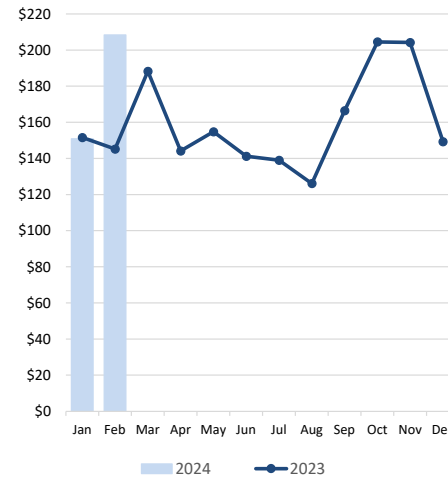
Las Vegas Hotel Occupancy



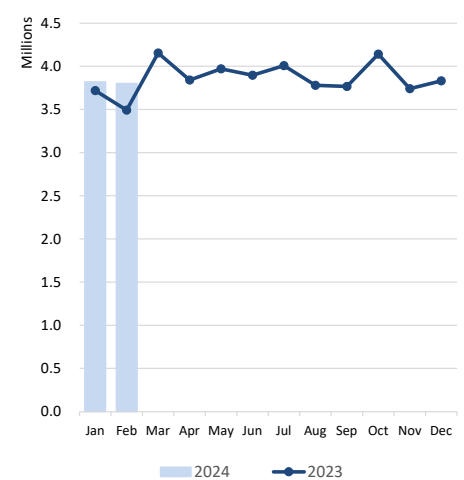
Las Vegas ADR



Las Vegas RevPAR



Room Nights Occupied



Notes: Occupancy, ADR and RevPAR data are derived from a survey sample representing more than 75% of the Las Vegas hotel inventory. Inherent variability in survey sampling and occasional variations in survey participants can affect monthly and year-over-year comparisons.



LVCVA EXECUTIVE SUMMARY

of Las Vegas, Laughlin & Mesquite, NV Tourism Indicators

February 2024

DATA DETAIL		Feb 2024	Feb 2023	YoY ('24 vs. '23)	Feb 2024 YTD	Feb 2023 YTD	YoY ('24 vs. '23)
LAS VEGAS	Visitor Volume (est.)	3,374,300	3,081,800	9.5%	6,757,800	6,357,100	6.3%
	Convention Attendance (est.)	764,800	663,400	15.3%	1,322,000	1,176,400	12.4%
	Weighted Room Inventory (as of Feb)	156,190	151,743	2.9%	156,190	151,743	2.9%
	Hotel Occupancy	83.9%	82.2%	1.7	81.3%	80.6%	0.7
	Weekend Occupancy	90.3%	89.3%	1.0	86.9%	88.9%	-2.0
	Midweek Occupancy	81.0%	78.8%	2.2	79.0%	76.9%	2.1
	Strip Occupancy	86.6%	85.2%	1.4	84.1%	83.2%	0.9
	Downtown Occupancy	71.1%	67.6%	3.5	68.7%	66.9%	1.8
	Average Daily Room Rate (ADR)	\$248.35	\$176.64	40.6%	\$219.72	\$184.37	19.2%
	Strip ADR	\$269.37	\$188.18	43.1%	\$236.68	\$197.19	20.0%
	Downtown ADR	\$104.01	\$95.23	9.2%	\$102.12	\$100.10	2.0%
	Revenue Per Available Room (RevPAR)	\$208.37	\$145.20	43.5%	\$178.63	\$148.60	20.2%
	Strip RevPAR	\$233.27	\$160.33	45.5%	\$199.05	\$164.06	21.3%
	Downtown RevPAR	\$73.95	\$64.38	14.9%	\$70.16	\$66.97	4.8%
	Total Room Nights Occupied	3,801,100	3,492,900	8.8%	7,620,800	7,212,300	5.7%
	Total En/Deplaned Air Passengers	4,334,125	4,177,054 r	3.8%	8,683,407	8,562,093 r	1.4%
Avg. Daily Auto Traffic: All Major Hwys	119,384 e	116,017	2.9%	117,065 e	116,355	0.6%	
Avg. Daily Auto Traffic: I-15 at NV/CA Border	37,994	38,414	-1.1%	38,173	39,458	-3.3%	
Gaming Revenue: Clark County	\$1,177,117,000	\$1,081,084,000 r	8.9%	\$2,294,641,000	\$2,210,798,000 r	3.8%	
Gaming Revenue: Las Vegas Strip	\$800,745,000	\$712,395,000 r	12.4%	\$1,486,923,000	\$1,425,633,000 r	4.3%	
Gaming Revenue: Downtown	\$76,193,000	\$74,190,000 r	2.7%	\$161,901,000	\$159,084,000 r	1.8%	
Gaming Revenue: Boulder Strip	\$75,685,000	\$75,268,000	0.6%	\$169,078,000	\$171,653,000	-1.5%	
LAUGHLIN	Visitor Volume (est.)	103,000	94,800	8.6%	191,000	180,700	5.7%
	Room Inventory (as of Feb)	8,692	8,752	-0.7%	8,692	8,752	-0.7%
	Total Occupancy	49.1%	49.0%	0.1	43.9%	44.3%	-0.4
	Average Daily Room Rate (ADR)	\$52.44	\$54.04	-3.0%	\$52.57	\$53.14	-1.1%
	Revenue Per Available Room (RevPAR)	\$25.75	\$26.48	-2.8%	\$23.08	\$23.54	-2.0%
	Total Room Nights Occupied	123,700	120,100	3.0%	229,100	228,900	0.1%
	Gross Gaming Revenue (rounded)	\$42,070,000	\$45,680,000	-7.9%	\$86,513,000	\$88,392,000	-2.1%
	Laughlin/Bullhead City En/Deplaned Passengers	15,156	14,617	3.7%	25,235	24,717	2.1%
	Avg. Daily Auto Traffic: Highway 163	4,608	4,504	2.3%	4,392	4,462	-1.6%
MESQUITE	Visitor Volume (est.)	70,000	74,000	-5.4%	142,000	148,000	-4.1%
	Room Inventory (as of Feb)	1,650	1,647	0.2%	1,650	1,647	0.2%
	Total Occupancy	75.4%	81.6%	-6.2	74.2%	77.2%	-3.0
	Average Daily Room Rate (ADR)	\$87.33	\$83.68	4.4%	\$80.02	\$77.89	2.7%
	Revenue Per Available Room (RevPAR)	\$65.85	\$68.28	-3.6%	\$59.37	\$60.13	-1.3%
	Total Room Nights Occupied	36,100	37,600	-4.0%	73,500	75,100	-2.1%
	Gross Gaming Revenue (rounded)	\$16,085,000	\$15,900,000	1.2%	\$31,945,000	\$31,677,000	0.8%
	Avg. Daily Auto Traffic: I-15 at NV/AZ border	27,407	27,104	1.1%	26,422	26,446	-0.1%

Sources: Las Vegas Convention and Visitors Authority; Harry Reid International Airport; Nevada Department of Transportation (NDOT); NV Gaming Control Board; Mohave County Airport Authority

Notes:

Air passengers and auto traffic counts are a blend of commercial, pass-thru and resident traffic in addition to visitors.

Occupancy, ADR and RevPAR data are derived from a survey sample representing more than 75% of the Las Vegas hotel inventory.

Inherent variability in survey sampling and occasional variations in survey participants can affect monthly and year-over-year comparisons.

e - estimate; r - revised