

### Stats at a Glance

	Nov 2024	YoY ('24 vs. '23)
Visitor Volume	3,313,700	0.6% ▲
Convention Attendance	548,200	-8.4% ▼
Room Inventory	150,859	-0.9% ▼
Hotel Occupancy	81.4%	(0.5) ▼
Average Daily Rate (ADR)	\$198.72	-20.3% ▼
RevPAR	\$161.76	-20.8% ▼
Room Nights Occupied	3,682,400	-1.5% ▼

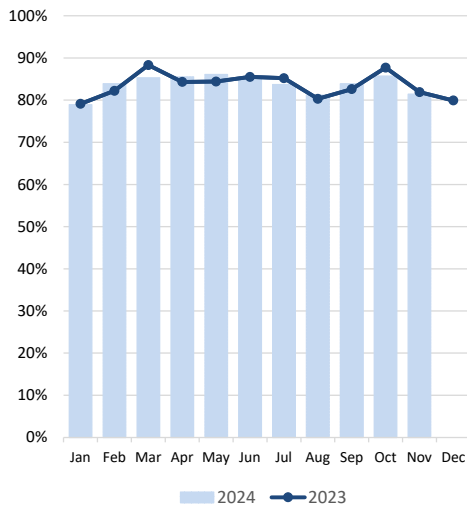
### Notes & Highlights

Punctuated by the second annual F1 Las Vegas Grand Prix and the SEMA tradeshow, Las Vegas hosted more than 3.3M visitors in November, slightly up over last year (+0.6% YoY).

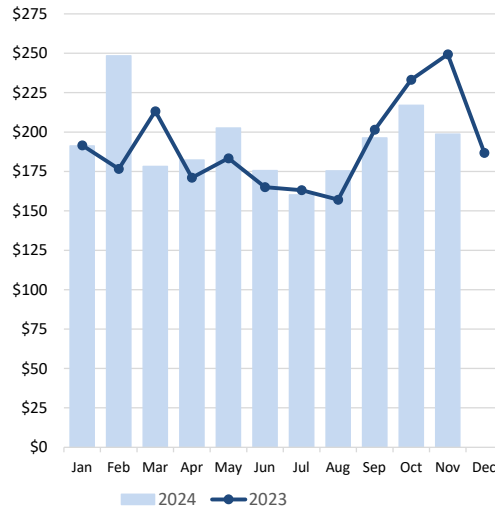
With a net decrease in churn of mid-size and smaller meetings vs. last year, convention attendance was 548k for the month, down -8.4% YoY.

November saw higher Weekend occupancy vs. last year (89.1%, up 0.4 pts) but lower Midweek occupancy (76.9%, down -2.0 pts) as overall Hotel occupancy for the month reached 81.4%, down -0.5 pts. While down compared to the record-shattering levels tied to last year's inaugural F1 race, monthly ADR this year saw the second highest on record for the month of November, reaching \$199 (-20.3% YoY) while RevPAR came in at approx. \$162 (-20.8% YoY).

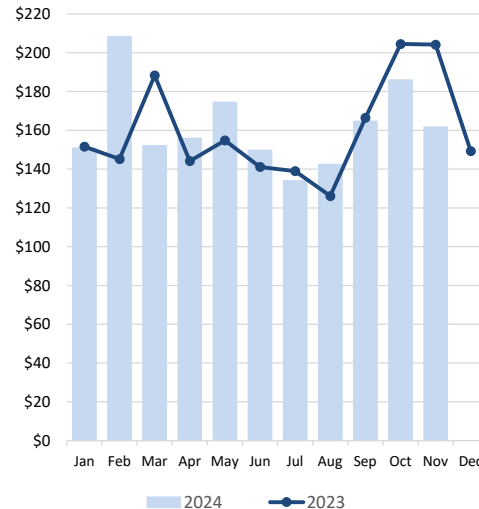
#### Las Vegas Hotel Occupancy



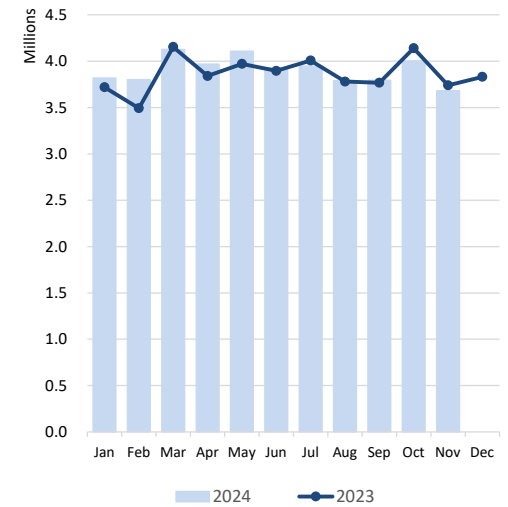
#### Las Vegas ADR



#### Las Vegas RevPAR



#### Room Nights Occupied



Notes: Occupancy, ADR and RevPAR data are derived from a survey sample representing more than 75% of the Las Vegas hotel inventory. Inherent variability in survey sampling and occasional variations in survey participants can affect monthly and year-over-year comparisons.



# LVCVA EXECUTIVE SUMMARY

of Las Vegas, Laughlin & Mesquite, NV Tourism Indicators

November 2024

DATA DETAIL		Nov 2024	Nov 2023	YoY ('24 vs. '23)	Nov 2024 YTD	Nov 2023 YTD	YoY ('24 vs. '23)
<b>LAS VEGAS</b>	<b>Visitor Volume (est.)</b>	3,313,700	3,292,800	0.6%	38,270,600	37,432,400	2.2%
	<b>Convention Attendance (est.)</b>	548,200	598,400	-8.4%	5,715,600	5,791,000	-1.3%
	<b>Weighted Room Inventory (as of Nov)</b>	150,859	152,299	-0.9%	150,859	152,299	-0.9%
	<b>Hotel Occupancy</b>	81.4%	81.9%	-0.5	83.7%	83.8%	-0.1
	<i>Weekend Occupancy</i>	89.1%	88.7%	0.4	90.9%	91.1%	-0.2
	<i>Midweek Occupancy</i>	76.9%	78.9%	-2.0	80.5%	80.7%	-0.2
	<i>Strip Occupancy</i>	84.3%	85.3%	-1.0	86.5%	86.5%	0.0
	<i>Downtown Occupancy</i>	70.2%	65.6%	4.6	71.3%	70.1%	1.2
	<b>Average Daily Room Rate (ADR)</b>	\$198.72	\$249.31	-20.3%	\$193.12	\$191.69	0.7%
	<i>Strip ADR</i>	\$212.49	\$270.17	-21.3%	\$206.08	\$204.92	0.6%
	<i>Downtown ADR</i>	\$104.50	\$108.67	-3.8%	\$104.67	\$105.24	-0.5%
	<b>Revenue Per Available Room (RevPAR)</b>	\$161.76	\$204.18	-20.8%	\$161.64	\$160.64	0.6%
	<i>Strip RevPAR</i>	\$179.13	\$230.46	-22.3%	\$178.26	\$177.26	0.6%
	<i>Downtown RevPAR</i>	\$73.36	\$71.29	2.9%	\$74.63	\$73.77	1.2%
	<b>Total Room Nights Occupied</b>	3,682,400	3,740,200	-1.5%	42,975,600	42,512,000	1.1%
<b>Total En/Deplaned Air Passengers</b>	4,736,260	4,839,637 r	-2.1%	53,580,223	52,823,905	1.4%	
<b>Avg. Daily Auto Traffic: All Major Hwys</b>	130,467 e	131,360 e	-0.7%	130,410 e	129,718 e	0.5%	
<i>Avg. Daily Auto Traffic: I-15 at NV/CA Border</i>	44,916	45,844	-2.0%	43,754	44,017	-0.6%	
<b>Gaming Revenue: Clark County</b>	\$1,163,468,000	\$1,214,858,000 r	-4.2%	\$12,279,645,000	\$12,217,323,000 r	0.5%	
<i>Gaming Revenue: Las Vegas Strip</i>	\$788,738,000	\$820,871,000 r	-3.9%	\$7,931,407,000	\$7,996,359,000 r	-0.8%	
<i>Gaming Revenue: Downtown</i>	\$79,006,000	\$81,187,000 r	-2.7%	\$848,978,000	\$833,778,000	1.8%	
<i>Gaming Revenue: Boulder Strip</i>	\$66,217,000	\$83,362,000	-20.6%	\$872,077,000	\$897,830,000	-2.9%	
<b>LAUGHLIN</b>	<b>Visitor Volume (est.)</b>	94,000	88,800	5.9%	1,231,000	1,191,100	3.3%
	<b>Room Inventory (as of Nov)</b>	8,864	8,692	2.0%	8,864	8,692	2.0%
	<b>Total Occupancy</b>	42.4%	43.1%	-0.7	50.3%	51.8%	-1.5
	<b>Average Daily Room Rate (ADR)</b>	\$55.08	\$55.37	-0.5%	\$60.82	\$61.38	-0.9%
	<b>Revenue Per Available Room (RevPAR)</b>	\$23.35	\$23.86	-2.1%	\$30.59	\$31.79	-3.8%
	<b>Total Room Nights Occupied</b>	112,900	112,300	0.5%	1,482,500	1,507,900	-1.7%
	<b>Gross Gaming Revenue (rounded)</b>	\$34,056,000	\$40,311,000	-15.5%	\$447,570,000	\$479,548,000 r	-6.7%
	<b>Laughlin/Bullhead City En/Deplaned Passengers</b>	14,584	15,116	-3.5%	129,365	138,637	-6.7%
	<b>Avg. Daily Auto Traffic: Highway 163</b>	4,423	4,535	-2.5%	4,818	4,779	0.8%
<b>MESQUITE</b>	<b>Visitor Volume (est.)</b>	66,000	74,000	-10.8%	778,000	853,000	-8.8%
	<b>Room Inventory (as of Nov)</b>	1,559	1,650	-5.5%	1,559	1,650	-5.5%
	<b>Total Occupancy</b>	72.9%	76.6%	-3.7	74.5%	79.0%	-4.5
	<b>Average Daily Room Rate (ADR)</b>	\$89.65	\$82.05	9.3%	\$83.19	\$75.51	10.2%
	<b>Revenue Per Available Room (RevPAR)</b>	\$65.35	\$62.85	4.0%	\$61.98	\$59.65	3.9%
	<b>Total Room Nights Occupied</b>	34,100	37,900	-10.0%	401,000	434,800	-7.8%
	<b>Gross Gaming Revenue (rounded)</b>	\$16,424,000	\$15,098,000	8.8%	\$173,057,000	\$167,148,000	3.5%
	<b>Avg. Daily Auto Traffic: I-15 at NV/AZ border</b>	30,650	30,022	2.1%	30,788	29,903	3.0%

Sources: Las Vegas Convention and Visitors Authority; Harry Reid International Airport; Nevada Department of Transportation (NDOT); NV Gaming Control Board; Mohave County Airport Authority

Notes:

Air passengers and auto traffic counts are a blend of commercial, pass-thru and resident traffic in addition to visitors.

Occupancy, ADR and RevPAR data are derived from a survey sample representing more than 75% of the Las Vegas hotel inventory.

Inherent variability in survey sampling and occasional variations in survey participants can affect monthly and year-over-year comparisons.

e - estimate; r - revised