

## Stats at a Glance

	Oct 2024	YoY ('24 vs. '23)
Visitor Volume	3,564,800	-1.8% ▼
Convention Attendance	559,200	-12.7% ▼
Room Inventory	150,646	-1.1% ▼
Hotel Occupancy	85.7%	(2.0) ▼
Average Daily Rate (ADR)	\$216.99	-7.0% ▼
RevPAR	\$185.96	-9.1% ▼
Room Nights Occupied	4,003,200	-3.3% ▼

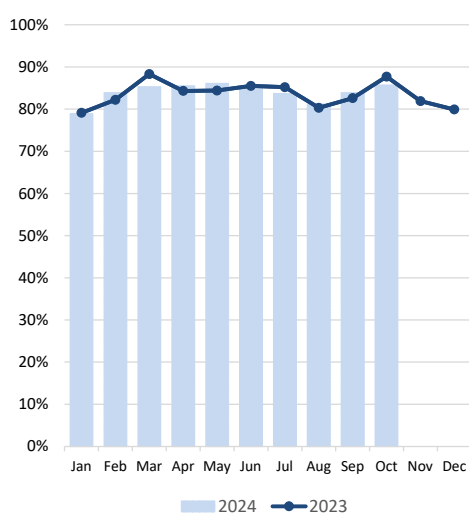
## Notes & Highlights

Compared to a particularly robust October last year, Las Vegas hosted approximately 3.56M visitors, -1.8% behind Oct 2023.

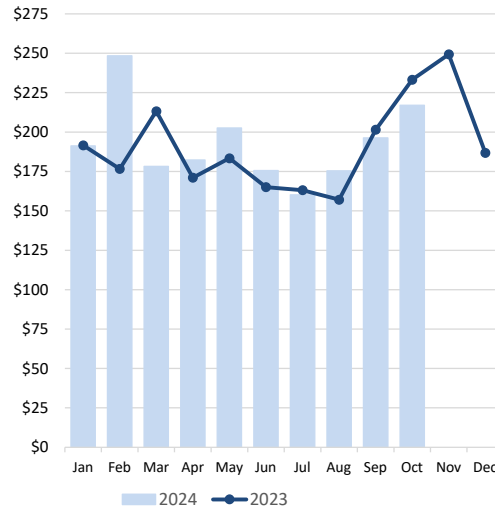
Convention attendance netted out with a -12.7% YoY decrease for the month, with different show rotations vs. last year, including the absence of TwitchCon (30k attendees) which was held elsewhere this year.

With higher Weekend occupancy vs. last year (94.6%, up 0.4 pts) but lower Midweek occupancy (82.6%, down 2.8 pts), overall Hotel occupancy for the month landed at 85.7%, down 2.0 pts. With a tough comparison to record rates of last October, ADR reached \$217 (-7.0% YoY) while RevPAR came in at approx. \$186 (-9.1% YoY).

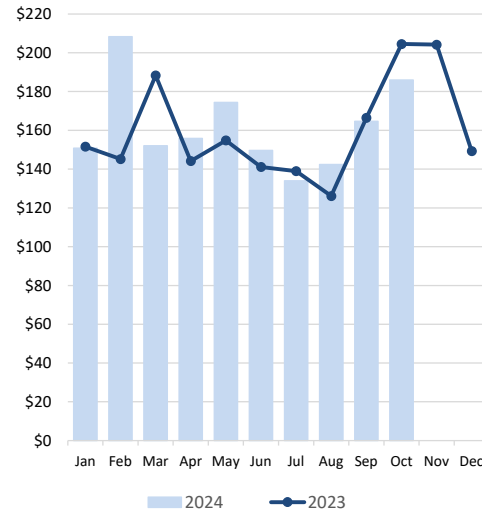
### Las Vegas Hotel Occupancy



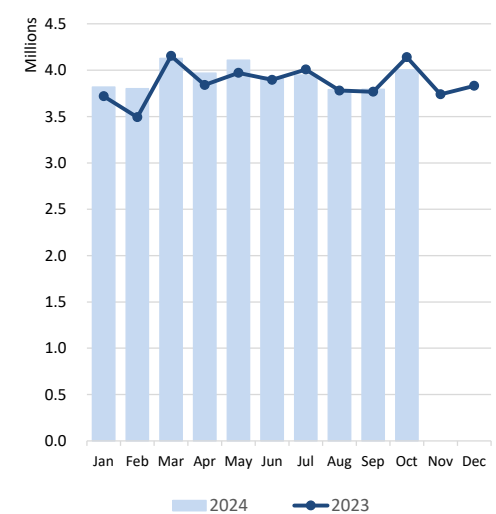
### Las Vegas ADR



### Las Vegas RevPAR



### Room Nights Occupied



Notes: Occupancy, ADR and RevPAR data are derived from a survey sample representing more than 75% of the Las Vegas hotel inventory. Inherent variability in survey sampling and occasional variations in survey participants can affect monthly and year-over-year comparisons.



# LVCVA EXECUTIVE SUMMARY

of Las Vegas, Laughlin & Mesquite, NV Tourism Indicators

October 2024

DATA DETAIL		Oct 2024	Oct 2023	YoY (*24 vs. *23)	Oct 2024 YTD	Oct 2023 YTD	YoY (*24 vs. *23)
<b>LAS VEGAS</b>	<b>Visitor Volume (est.)</b>	3,564,800	3,630,300	-1.8%	34,956,900	34,139,600	2.4%
	<b>Convention Attendance (est.)</b>	559,200	640,600	-12.7%	5,167,400	5,192,600	-0.5%
	<b>Weighted Room Inventory (as of Oct)</b>	150,646	152,289	-1.1%	150,646	152,289	-1.1%
	<b>Hotel Occupancy</b>	85.7%	87.7%	-2.0	83.9%	84.0%	-0.1
	<i>Weekend Occupancy</i>	94.6%	94.2%	0.4	91.2%	91.3%	-0.1
	<i>Midweek Occupancy</i>	82.6%	85.4%	-2.8	80.8%	80.9%	-0.1
	<i>Strip Occupancy</i>	87.8%	89.6%	-1.8	86.7%	86.6%	0.1
	<i>Downtown Occupancy</i>	80.4%	82.3%	-1.9	71.5%	70.6%	0.9
	<b>Average Daily Room Rate (ADR)</b>	\$216.99	\$233.22	-7.0%	\$192.59	\$186.13	3.5%
	<i>Strip ADR</i>	\$232.25	\$251.42	-7.6%	\$205.48	\$198.59	3.5%
	<i>Downtown ADR</i>	\$121.73	\$126.78	-4.0%	\$104.68	\$104.93	-0.2%
	<b>Revenue Per Available Room (RevPAR)</b>	\$185.96	\$204.53	-9.1%	\$161.58	\$156.35	3.3%
	<i>Strip RevPAR</i>	\$203.92	\$225.27	-9.5%	\$178.15	\$171.98	3.6%
	<i>Downtown RevPAR</i>	\$97.87	\$104.34	-6.2%	\$74.85	\$74.08	1.0%
	<b>Total Room Nights Occupied</b>	4,003,200	4,140,700	-3.3%	39,293,200	38,771,800	1.3%
	<b>Total En/Deplaned Air Passengers</b>	5,288,741	5,479,904	-3.5%	48,804,433	47,984,268	1.7%
<b>Avg. Daily Auto Traffic: All Major Hwys</b>	134,155 e	131,964 e	1.7%	130,405 e	129,553 e	0.7%	
<i>Avg. Daily Auto Traffic: I-15 at NV/CA Border</i>	43,055	42,277	1.8%	43,638	43,834	-0.4%	
<b>Gaming Revenue: Clark County</b>	pending	\$1,137,339,000 r	N/A	pending	\$11,002,573,000	N/A	
<i>Gaming Revenue: Las Vegas Strip</i>	pending	\$714,482,000	N/A	pending	\$7,175,606,000	N/A	
<i>Gaming Revenue: Downtown</i>	pending	\$97,537,000 r	N/A	pending	\$752,581,000	N/A	
<i>Gaming Revenue: Boulder Strip</i>	pending	\$88,626,000	N/A	pending	\$814,468,000	N/A	
<b>LAUGHLIN</b>	<b>Visitor Volume (est.)</b>	106,000	101,800	4.1%	1,137,000	1,102,300	3.1%
	<b>Room Inventory (as of Oct)</b>	8,864	8,692	2.0%	8,864	8,692	2.0%
	<b>Total Occupancy</b>	46.5%	47.8%	-1.3	51.0%	52.7%	-1.7
	<b>Average Daily Room Rate (ADR)</b>	\$55.01	\$55.75	-1.3%	\$61.30	\$61.86	-0.9%
	<b>Revenue Per Available Room (RevPAR)</b>	\$25.58	\$26.65	-4.0%	\$31.26	\$32.60	-4.1%
	<b>Total Room Nights Occupied</b>	127,600	128,900	-1.0%	1,369,600	1,395,600	-1.9%
	<b>Gross Gaming Revenue (rounded)</b>	pending	\$47,567,000	N/A	pending	\$439,237,000	N/A
	<b>Laughlin/Bullhead City En/Deplaned Passengers</b>	14,781	14,881	-0.7%	114,781	123,521	-7.1%
	<b>Avg. Daily Auto Traffic: Highway 163</b>	4,770	4,778	-0.2%	4,858	4,803	1.1%
<b>MESQUITE</b>	<b>Visitor Volume (est.)</b>	77,000	85,000	-9.4%	712,000	779,000	-8.6%
	<b>Room Inventory (as of Oct)</b>	1,559	1,650	-5.5%	1,559	1,650	-5.5%
	<b>Total Occupancy</b>	81.9%	84.9%	-3.0	74.6%	79.2%	-4.6
	<b>Average Daily Room Rate (ADR)</b>	\$92.41	\$82.49	12.0%	\$82.59	\$74.89	10.3%
	<b>Revenue Per Available Room (RevPAR)</b>	\$75.68	\$70.03	8.1%	\$61.61	\$59.31	3.9%
	<b>Total Room Nights Occupied</b>	39,600	43,400	-8.8%	366,900	396,900	-7.6%
	<b>Gross Gaming Revenue (rounded)</b>	pending	\$16,287,000	N/A	pending	\$152,050,000	N/A
	<b>Avg. Daily Auto Traffic: I-15 at NV/AZ border</b>	32,954	31,584	4.3%	30,802	29,892	3.0%

Sources: Las Vegas Convention and Visitors Authority; Harry Reid International Airport; Nevada Department of Transportation (NDOT); NV Gaming Control Board; Mohave County Airport Authority

Notes:

Air passengers and auto traffic counts are a blend of commercial, pass-thru and resident traffic in addition to visitors.

Occupancy, ADR and RevPAR data are derived from a survey sample representing more than 75% of the Las Vegas hotel inventory.

Inherent variability in survey sampling and occasional variations in survey participants can affect monthly and year-over-year comparisons.

e - estimate; r - revised